



KONICA MINOLTA

The essentials of imaging



OFFERING
THE SKILLS
TO WIN

bizhub C452/C552/C652

Simply convincing

Office systems bizhub C452/C552/C652

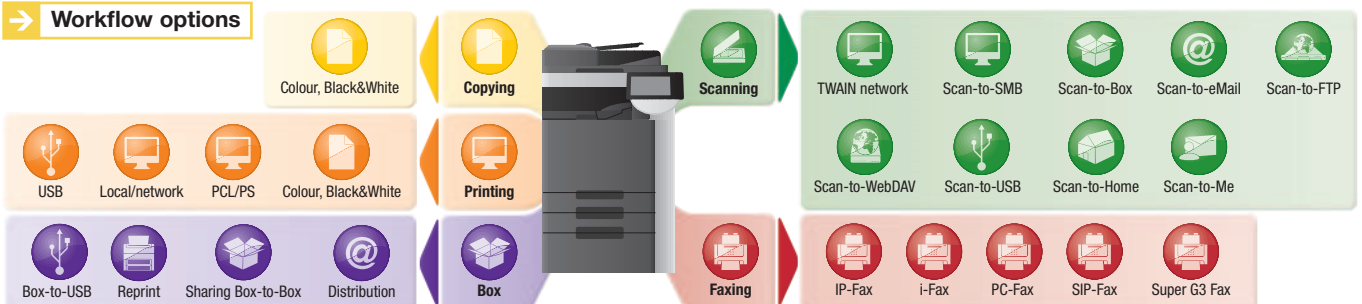


Convincing values inside and out

To stay ahead, large workgroups and busy departments as well as CRDs continuously need to upgrade and enhance their document production and communication facilities. For that purpose Konica Minolta's colour multifunctionals bizhub C452, C552 and C652 combine advanced technology, amazing versatility and absolute reliability with an attractive, futuristic InfoLine design – featuring all the attributes essential to their targeted user group:

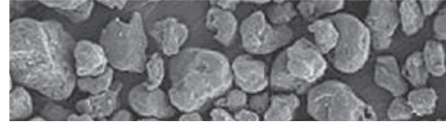
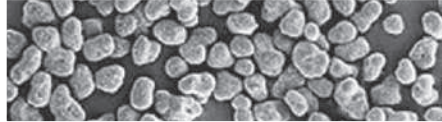
- A convincing performance is the key to **true multifunctionality**, such as scanning while printing, and high productivity. Providing both, the bizhub C452/C552/C652 boast an array of high-performance features: Their **1 GHz CPU** ensures an amazing processing speed and guarantees impressive computing power. With **2 GB of DDR2** memory and a **250 GB S-ATA2** HDD they are generously equipped with innovative, high-speed memory and a sizable, ultra-fast hard disk. In addition, their **PCI Express** represents latest PCI bus technology for extra speed enhancement and further improved performance.
- A convincing design turns any equipment into the highlight of the corporate office or print room. The bizhub C452/C552/C652's futuristic **InfoLine design** does more than that – its intuitive operation considerably improves user convenience and operability.
- The bizhub C452, C552 and C652 convince with Konica Minolta's "**skills to win**": they combine comprehensive communication capabilities in a single device, feature latest technology and advanced software applications, provide above-their-class colour and b/w quality and are entirely eco-friendly.

→ Workflow options



Simitri® HD polymerised toner

Conventional toner



Technology & quality, absolutely convincing

→ Advanced Emperon™ controller

Konica Minolta's proprietary Emperon™ print controller is an integral part of the bizhub C452/C552/C652's overall system architecture and ensures seamless integration into any standard network environment, offering maximum compatibility with standard **PCL, PostScript 3, PDF and XPS** support. In addition to its **PDF 1.7** capability it features numerous quality enhancements, including auto-trapping and black overprint. And with **PPML** (Personalized Print Markup Language), the Emperon™ ensures higher printing performance and throughput for Variable Data Printing, such as personalised mailings and advertising materials. Ease of operation has been improved with the introduction of a customised printer driver tab: under **MyTab** users can individually combine their frequently used features enabling them to make all settings in a single screen.



→ Unique Simitri® HD toner

With tiny and uniformly shaped toner particles Konica Minolta's proprietary Simitri® HD polymerised toner achieves an image quality second to none. Razor-sharp text and lines, colours that don't fade, and a smooth and highly durable print finish ensure longer-lasting prints of better quality than ever – perfect for professional materials like mailings and leaflets, the print surface doesn't break or peel on folded pages. At the same time, each Simitri® HD cartridge lasts longer due to its **larger capacity** and is more **economical** because toner consumption is lower.

Their combination of **low power and sleep mode** with an individually programmable timer ensures optimal power control. At the same time, Simitri® HD polymerised toner enables fixing at lower temperatures, for which induction heating provides an accurate and instantaneous source of heat. This minimises the warm-up time to a revolutionary 45 seconds while maximising energy efficiency.

→ Impressive eco-performance

Complying with the regulations of the **Energy Star, German Blue Angel, WEEE and RoHs**, the bizhub C452/C552/C652 impress with the lowest energy consumption values yet achieved in products of their class.

Pursuing an **ISO 14001**-based environmental management system, Konica Minolta promotes resource-friendly product development and, with its zero waste manufacturing concept, strives to **minimise the ecological impact** of its products with efficient environmental activities throughout all stages of the product lifecycle. For this purpose, the environmental impact is assessed at each stage in a product's life: from raw materials and parts procurement to manufacture, transportation, sale, reuse and disposal.

→ Configurations



bizhub C452 

bizhub C552 

bizhub C652 



Complete multifunctionality, **convincing versatility**

→ User convenience and operability

The bizhub C452/C552/C652's large full-colour touch screen display can be tilted and turned to guarantee excellent visibility from any angle. Enhanced colour preview and **thumbnail features** allow checking exactly what the printed document will look like, avoiding mistakes before production. The logical screen layout, the **animated help** and guidance features as well as an optional hardware keyboard further support the simple and straightforward operation.

→ Competent printing & copying

As productive printers and copiers, the bizhub C452/C552/ C652 offer enhanced multifunctionality for a powerful performance and focus on the fully automatic production of professional documents. These systems impress with **100% duplex productivity** and a versatile feature set for the creation of sophisticated print products. In colour as much as in black and white, they are highly flexible, economical and always ready to go.

→ Enhanced user box functionality

Opening up a new dimension in office communication, Konica Minolta's **unique User Box** approach makes the storing and managing of information on the systems' internal hard disc truly efficient, and enables fast and convenient sharing or forwarding of scanned, printed, copied and faxed documents. Up to **1,000 user boxes** can be set up with flexible access rights and boxes defined as public, for group use or private. Especially convenient is the direct Box to USB capability that lets users transfer documents from their box to a USB stick and vice versa. This open system enables users to take advantage of the bizhub's multifunctional communication capabilities without requiring a PC.



→ High-speed scanning & faxing

Similarly productive as scanners, bizhub C452, C552 and C652 streamline the simple distribution and sharing of information. With impressive **78 opm** they offer scan to eMail, FTP, SMB and user box, making them the ideal input tools for professional document archiving and integration into Document Management Systems. The clever **scan-to-USB** feature gives user flexibility an attractive boost, enabling time-saving direct scanning from the bizhub to the USB stick without the detour via the PC.

The choice of scan formats includes **JPEG and multi-page PDF, XPS and TIFF** as well as **compact PDF and compact XPS**, which with their considerably reduced file sizes help to ease network traffic and speed up communication.

Available in combination with user authentication, the functions **scan-to-Me** and **scan-to-Home** serve to speed up the process of sending scans to the user's own e-mail address (scan-to-Me) or own registered PC folder (scan-to-Home). The administrator can take advantage of these features to restrict the choice of scan destinations to a user's own destinations.

To any location requiring fax communication, the bizhub C452/C552/C652 offer generous digital and analogue fax capabilities, including Internet Fax and **IP (Intranet) Fax in colour**. Various security features make confidential fax communication reliably safe.

→ Comprehensive media capabilities

Media processing on the bizhub C452/C552/C652 is impressively flexible: Their generous paper supply of **up to 6,650 sheets** is sufficient to complete even high-volume jobs without interruption. Paper sizes range from **A6 to A3+**, and paper qualities include thick paper of up to **300 gsm**. Special media are processed without hitch, same as customised sizes, including banner printing on individual sheets of up to **1.2 metres** length.

→ Professional finishing versatility

The bizhub C452, C552 and C652 can be equipped with versatile finishing options. A highlight in the bizhub C552/C652's booklet finisher is the **endless booklet production**. This finisher also provides a letter-fold functionality, equally with endless capacity and perfect for the time-saving automatic folding of invoices, mailings and other letters. The finishing versatility further includes automatic stapling of up to **100 sheets, 2- and 4-hole** punching for professional manuals, reports and extensive documentation; the insertion of preprinted covers of up to 209 gsm via the optional post inserter and a z-fold unit for automatic folding to size of A3 charts and tables.

The bizhub C452 can be enhanced with its own floor-type finisher that impresses with its **modular concept** and offers attractive user flexibility. In addition to multi-position stapling of manuals, reports and other comprehensive documentation, punching can be equipped, ideal for example for meeting minutes. The inline booklet feature provides the fully automatic production of centre-folded and saddle-stitched brochures and **booklets of up to 60 pages**.





Convincing administration, streamlined workflows

→ Convenient PageScope utilities

The standard PageScope Suite provides comprehensive account and data management, efficient **device monitoring** and satisfies important administrator demands: The PageScope Data Administrator facilitates the integration of new equipment into existing workflows as well as the programming of **user authentication** data, helping to cut costs and control output volumes. The practical **Print Status Notifier** keeps users informed of the device status and progress of their jobs with automatic pop-up messages on the PC screen. Users can concentrate on other tasks and save time, as there's no need to keep checking the printer. The **PageScope Box Operator** on the other hand provides convenient direct access from the PC to documents stored in user boxes and with multi-file preview enables fast searches via thumbnails.

→ PageScope Enterprise Suite

This enhanced software suite gives administrators a full monitoring and management application that provides complete access to all user- and device-related information from a central server platform. The modules can be integrated individually or in combination for maximised benefits:

- The standard **PageScope NetCare Device Manager** facilitates the central implementation of system network configurations and central status monitoring. The application provides fast access to and simple monitoring of individual or all devices on the network, helping to maximise the uptime of all monitored equipment.
- The **PageScope Authentication Manager** enables central management of the user database and user rights.
- The **PageScope Account Manager** provides the convenient central collection of detailed counter readings and the ensuing cost calculation.
- The **PageScope MyPanel Manager** makes the individual creation of central user profiles, personalised address books and scan destinations fast, straightforward and convenient.



→ bEST technologies

With the bizhub Extended Solution Technology (bEST) the bizhub C452/C552/C652 can be adapted to close the gap to customer environments. Document **archiving workflows** can for example be started **directly at the bizhub panel**, inputting all required information like document type and additional index fields during the scan process so that post-treatment of the scans in the PC becomes obsolete.

bEST can make life easier also for copying and printing. After authentication at the output device bEST OpenAPI is used to give permission to each function based on each user's specific access rights. Via the user ID it is possible to manage all personal print jobs directly at the bizhub panel. Bringing user experience to the next level, the design of the panel can be completely customised, using i-Option and bEST OpenAPI in conjunction.

→ i-Option

The clever software enhancements of i-Option increase convenience and streamline user operation of the bizhub C452/C552/C652, also enabling safe communication with PDFs. The i-Option **Web Browser** provides direct panel access to information and documents on the Internet. It makes browsing the web from the MFP's control panel just as convenient as direct printing of web pages or linked PDF and XPS files.

Digital ID encryption and **digital signature** protect PDF files against tampering and improper use. i-Option enables the processing of scanned data with OCR to create **searchable PDF** documents. These include a full-text search capability as well as the convenience of being able to copy text from the PDF into other documents or applications.

→ Impressive security standards

Beyond Konica Minolta's comprehensive standard security features, the bizhub C452/C552/C652 include advanced security functionality and are of course certified to **ISO 15408 EAL3**.

With client authentication via **IEEE 802.1x**, the systems can be connected to secure networks. Safe network communication from and to these devices is ensured by encryption with the **IPsec** protocol. The **standard HDD encryption** kit protects all data on the hard disk against unauthorised use. Authentication via optional **finger vein scanner** or non-contact ID card limits system access to authorised users and has been improved in convenience and usability.

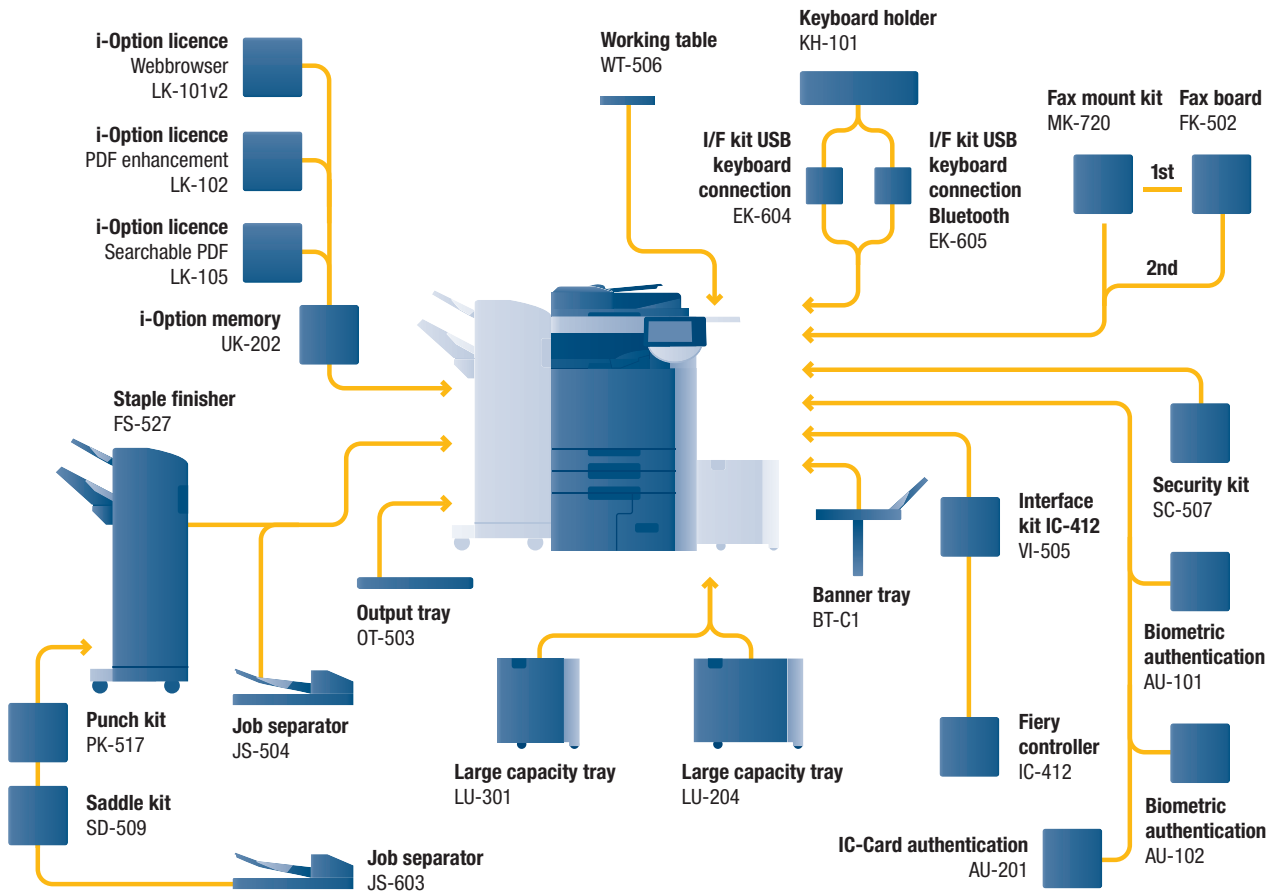
Enhanced security against unauthorised copying is also available: With the **Copy Guard** function, an original will not be copied at all if the MFP detects a special protection pattern in an original, while Password Copy enables copying of the protected original if the correct password is entered

→ CS Remote Care remote monitoring

Pro-active and highly flexible service support is available with CS Remote Care. Konica Minolta's remote monitoring application helps to keep the bizhub C452/C552/C652 running smoothly, minimising interruptions and **maximising system availability**. All relevant system data are transmitted directly to the Konica Minolta service in an automated process that never needs user intervention.



➔ Option diagram & descriptions bizhub C452



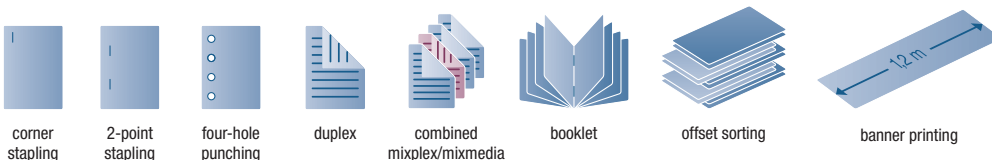
bizhub C452
Basic system

Communication centre with 45/45 ppm b/w and colour. Standard Emperon™ print controller with PCL 6c, PostScript 3, PDF 1.7 and XPS support. Paper capacity of 500 + 500 + 1,000 + 1,500 sheets and 150 sheets manual bypass. Media from A6 to A3+, 1.2 m banner and 64–300 gsm. 2 GB memory, 250 GB hard disc and 1 GB Ethernet standard.

FS-527 Staple finisher	50 sheet stapling, output capacity 3,200 sheets
PK-517 Punch kit	4 hole punching
SD-509 Saddle kit	Booklet finishing
JS-603 Job separator	Job separator e.g. for fax output
JS-504 Job separator	Job separator e.g. for fax output
OT-503 Output tray	Output tray used instead of finisher
LU-301 Large capacity tray	A4, 3,000 sheets, 64–256 gsm
LU-204 Large capacity tray	A4–A3+, 2,500 sheets, 64–256 gsm
BT-C1 Banner tray	Multipage banner printing
VI-505 Interface kit	Fiery controller interface card
IC-412 Fiery controller	Professional colour print controller

AU-101 Biometric authentication	Finger vein scanner
AU-102 Biometric authentication	Finger vein scanner
AU-201 IC-Card authentication	IC-Card scanner
SC-507 Security kit	Copy Guard function
KH-101 Keyboard holder	To place the USB keyboard
EK-604 I/F kit	USB keyboard connection
EK-605 I/F kit	USB keyboard connection Bluetooth
MK-720 Fax mount kit	I/F board for fax FK-502
FK-502 Fax board	Super G3 fax
WT-506 Working table	Authentication device placement
LK-101v2 i-Option licence	Webbrower, Image panel
LK-102 i-Option licence	PDF enhancement
LK-105 i-Option licence	Searchable PDF
UK-202 i-Option memory	Memory extension for i-Option

➔ Finishing options bizhub C452



corner stapling

2-point stapling

four-hole punching

duplex

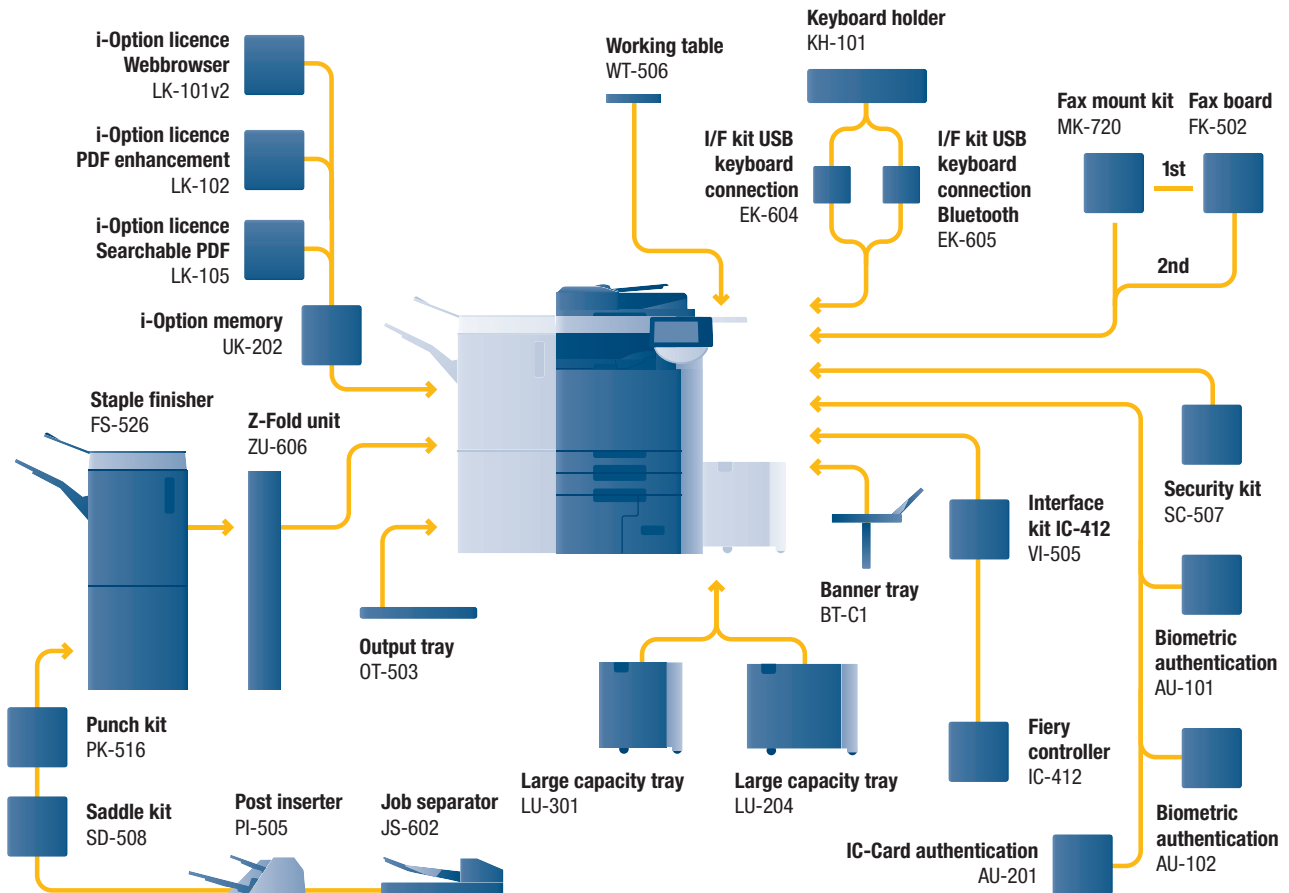
combined mixplex/mixmedia

booklet

offset sorting

banner printing

➔ Option diagram & descriptions bizhub C552 and bizhub C652



bizhub C552/C652
Basic system

Communication centres with 65/55 ppm b/w and 50/45 ppm colour. Standard Emperon™ print controller with PCL 6c, PostScript 3, PDF 1.7 and XPS support. Paper capacity of 500 + 500 + 1,000 + 1,500 sheets and 150 sheets manual bypass. Media from A6 to A3+, 1.2 m banner and 64–300 gsm. 2 GB memory, 250 GB hard disc and 1 GB Ethernet standard.

FS-526 Staple finisher	100 sheet stapling, output capacity 3,100 sheets
PK-516 Punch kit	2/4 hole punching
SD-508 Saddle kit	Booklet finishing, letter-folding
JS-602 Job separator	Job separator e.g. for fax output
PI-505 Post inserter	Cover insertion, post finishing
ZU-606 Z-Fold unit	Z-fold for A4 and A3
OT-503 Output tray	Output tray used instead of finisher
LU-301 Large capacity tray	A4, 3,000 sheets, 64–256 gsm
LU-204 Large capacity tray	A4–A3+, 2,500 sheets, 64–256 gsm
BT-C1 Banner tray	Multipage banner printing
VI-505 Interface kit	Fiery controller interface card

IC-412 Fiery controller	Professional colour print controller
AU-101 Biometric authentication	Finger vein scanner
AU-102 Biometric authentication	Finger vein scanner
AU-201 IC-Card authentication	IC-Card scanner
SC-507 Security kit	Copy Guard function
KH-101 Keyboard holder	To place the USB keyboard
EK-604 I/F kit	USB keyboard connection
EK-605 I/F kit	USB keyboard connection Bluetooth
MK-720 Fax mount kit	I/F board for fax FK-502
FK-502 Fax board	Super G3 fax
WT-506 Working table	Authentication device placement
LK-101v2 i-Option licence	Webbrowser, Image panel
LK-102 i-Option licence	PDF enhancement
LK-105 i-Option licence	Searchable PDF
UK-202 i-Option memory	Memory extension for i-Option

➔ Finishing options bizhub C552 and bizhub C652



➔ Technical specifications bizhub C452/C552/C652

■ Copier specifications

Copying process	Electrostatic laser copy Tandem indirect
Toner system	Simitri HD®- polymerised toner
Copy/print speed A4 (mono/colour)	Up to 45/45 cpm (bizhub C452) Up to 55/45 cpm (bizhub C552) Up to 65/50 cpm (bizhub C652)
Copy/print speed A3 (mono/colour)	Up to 23/23 cpm (bizhub C452) Up to 28/23 cpm (bizhub C552) Up to 33/25 cpm (bizhub C652)
Autoduplex speed A4 (mono/colour)	Up to 45/45 cpm (bizhub C452) Up to 55/45 cpm (bizhub C552) Up to 65/50 cpm (bizhub C652)
1st copy/print time (mono/colour)	4.8/6.0 sec. (bizhub C452) 4.3/6.0 sec. (bizhub C552) 3.8/5.5 sec. (bizhub C652)
Warm-up time	Approx. 45 sec. ¹
Copy resolution	600 x 600 dpi
Gradation	256 gradations
Multi-copy	1–9,999
Original format	A5–A3
Magnification	25–400% in 0.1% steps; Autozooming
Copy functions	Chapter Cover and page insertion Proof copy (print and screen) Adjustment test print Digital art functions Job setting memory Poster mode; Image repeat Overlay Stamping Copy protection

■ Printer specifications

Print resolution	Equivalent to 1,800 x 600 dpi
Controller CPU	PowerPC MC7448 @ 1 GHz; 64 BIT
Page description language	PCL 6c (PCL 5c + XL3.0) PostScript 3 (CPSI 3017) XPS
Operating systems	Windows 2000 Windows XP Windows XP64 Windows VISTA 32 Windows VISTA 64 (DPWS support) Windows Server 2000 Windows Server 2003 Windows Server 2003x64 Windows Server 2008 Windows Server 2008x64 Macintosh 9.x Macintosh 10.x Unix Linux Citrix
Printer fonts	80x PCL Latin 137x PostScript 3 Emulation Latin
Print functions	Direct print of PCL Direct print of PS Direct print of TIFF Direct print of XPS Direct print of PDF and Encrypted PDF files Mixmedia and mixplex Job programming "Easy Set" Overlay Watermark Copy Protection

■ Scanner specifications

Scan speed	Colour up to 78 opm (300 dpi via DF) Mono up to 78 opm (300 dpi via DF)
Scan resolution	Max.: 600 x 600 dpi
Scan modes	Network TWAIN scan Scan-to-eMail (scan-to-Me) Scan-to-FTP Scan-to-SMB (scan-to-Home) Scan-to-Box Scan-to-WebDAV Scan-to-DPWS Scan-to-USB
File formats	JPEG TIFF PDF Compact PDF Encrypted PDF XPS Compact XPS
Scan destinations	2,100 (single + group); LDAP support
Scan functions	Annotation (text/time/date) for PDF; up to 400 job programs

■ Fax specifications

Fax standard	Super G3 (optional)
Fax transmission	Analogue i-Fax Colour i-Fax (RFC3949-C) IP-Fax SIP-Fax
Fax resolution	Max.: 600 x 600 dpi (ultra-fine)
Fax compression	MH; MR; MMR; JBIG
Fax modem	Up to 33.6 Kbps
Fax destinations	2,100 (single + group)
Fax functions	Polling; Time shift; PC-Fax; Receipt to confidential box; Receipt to eMail/FTP/SMB; up to 400 job programs

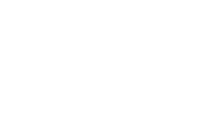
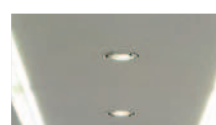
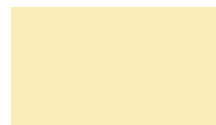
■ User box specification

Max. user boxes	1,000
Max. storable documents	Up to 3,000 documents or 10,000 pages
Type of user boxes	Public Personal (with password or authentication) Group (with authentication)
Type of system boxes	Secure print Encrypted PDF print Fax receiving Fax polling
User box functionality	Reprint; combination Download Sending (email/FTP/SMB and Fax) Copy box to box

■ System Specifications

System memory	2,048 MB
System hard disc	250 GB
Interface	10-Base-T/100-Base-T/1,000-Base-T Ethernet; USB 2.0
Network protocols	TCP/IP (IPv4 / IPv6); IPX/SPX; NetBEUI; AppleTalk (EtherTalk); SMB; LPD; IPP; SNMP; HTTP
Frame types	Ethernet 802.2; Ethernet 802.3; Ethernet II; Ethernet SNAP
Automatic document feeder	Up to 100 originals; A6–A3; 35–210 gsm
Printable paper size	A6–A3 full bleed; customised paper sizes; banner paper max. 1,200 x 297 mm
Printable paper weight	64–300 gsm
Paper input capacity	Standard: 3,650 sheets Max.: 6,650 sheets
Tray 1 + 2	500 sheets; A5–A3+; 64–256 gsm
Tray 3	1,500 sheets; A4; 64–256 gsm

¹ Warm up time may vary depending on the operating environment and usage



Tray 4	1,000 sheets; A4; 64–256 gsm
Manual Bypass	150 sheets; A6–A3+; custom sizes; banner 64–300 gsm
Large Capacity Cabinet (optional)	3,000 sheets; A4; 64–256 gsm
Large Capacity Cabinet (optional)	2,500 sheets; A4–A3+; 64–256 gsm
Automatic duplexing	A5–A3+; 64–256 gsm
Finishing modes (optional)	Offset; group; sort; staple; punch; centre-fold; booklet (bizhub C452) Offset; group; sort; staple; punch; post insertion; z-fold; centre-fold; letter-fold; booklet (bizhub C552/C652)
Output capacity (w. finisher)	Max.: 3,200 sheets (bizhub C452)
Output capacity (w/o finisher)	Max.: 3,100 sheets (bizhub C552/C652) Max.: 250 sheets
Stapling	50 sheets or 48 sheets + 2 cover sheets (up to 209 gsm) (bizhub C452) 100 sheets or 98 sheets + 2 cover sheets (up to 209 gsm) (bizhub C552/C652)
Stapling output capacity	Max. 1,000 sheets
Letterfold	Up to 3 sheets (bizhub C552/C652 only)
Letterfold capacity	20 sheets (tray); unlimited (bizhub C552/C652 only)
Booklet	15 sheets or 14 sheets + 1 cover sheet (up to 209 gsm) (bizhub C452) 20 sheets or 19 sheets + 1 cover sheet (up to 209 gsm) (bizhub C552/C652)
Booklet output capacity	75 sheets (bizhub C452) 100 sheets (tray); unlimited (bizhub C552/C652)
Copy/print volume (monthly)	Rec.: 65,000; Max.: 150,000 (bizhub C452) Rec.: 80,000; Max.: 200,000 (bizhub C552) Rec.: 100,000; Max.: 250,000 (bizhub C652)
Toner lifetime	Black 45,000; CMY 30,000
Imaging unit lifetime	Black 285,000/1,140,000 (Drum/Developer) CMY 120,000 (bizhub C452/C552) CMY 135,000 (bizhub C652)
Power consumption	220–240 V / 50/60Hz Less than 2.0 KW (bizhub C452/C552) Less than 2.1 KW (bizhub C652)
System dimensions (W x D x H, mm)	650 x 879 x 1155
System weight	Approx. 221 kg

■ System features

Security	ISO 15408 EAL3 (in evaluation) IP filtering and port blocking SSL2; SSL3 and TSL1.0 network communication IPsec support IEEE 802.1x support User authentication Authentication log; Secure Print Hard disc overwrite (8 standard types) Hard disc data encryption (AES 256) Memory data auto deletion Confidential fax receiving Print user data encryption Copy Protection (copy guard, password)
Accounting	Up to 1,000 user accounts Active Directory support (user name + password + email + smb folder) User function access definition Biometric authentication (finger vein) optional IC-Card authentication (IC-Card reader) optional
Software	PageScope Net Care Device Manager PageScope Data Administrator PageScope Box Operator PageScope Direct Print Print Status Notifier Driver Packaging Utility Log Management Utility





KONICA MINOLTA

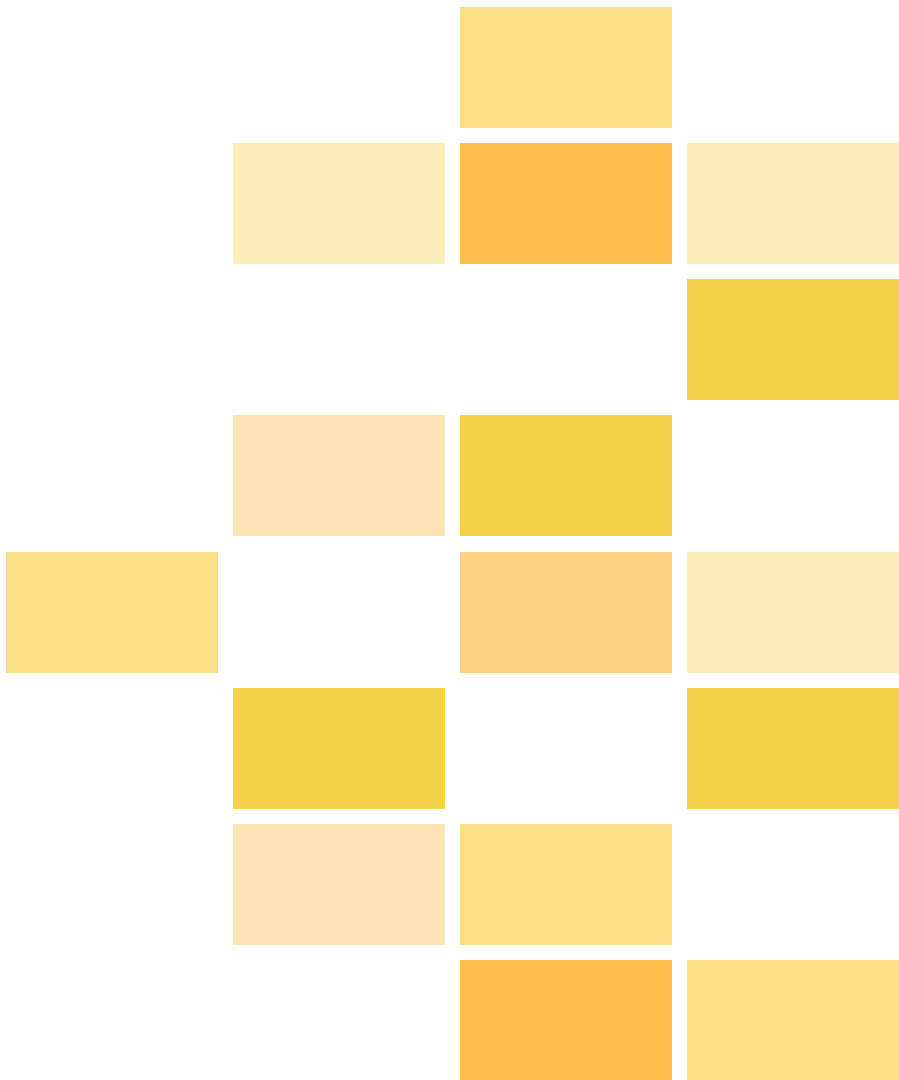
Simitri HD
High Definition Polymerised Toner



CITRIX



SAP® Printer Vendor Solution



- All specifications relating to paper capacity refer to A4-size paper of 80 gsm quality
- All specifications relating to scanning, copying or printing speeds refer to A4-size paper that is scanned, copied or printed crosswise in multipage, simplex mode.
- The support and availability of the listed specifications and functionalities varies depending on operating systems, applications, network protocols as well as network and system configurations
- The stated life expectancy of each consumable is based on specific operating conditions such as page coverage for a particular page size (5 % coverage of A4). The actual consumables life will vary depending on the use and other printing variables including page coverage, page size, media type, continuous or intermittent printing, ambient temperature and humidity
- Some of the product illustrations contain optional accessories
- Specifications and accessories are based on the information available at the time of printing and are subject to change without notice
- Konica Minolta does not warrant that any prices or specifications mentioned will be error-free
- Microsoft, Windows and the Windows logo are trademarks, or registered trademarks, of Microsoft Corporation in the United States and/or other countries
- SAP and all SAP logos are trademarks or registered trademarks of SAP AG in Germany and in several other countries
- All other brand and product names may be registered trademarks or trademarks of their respective holders and are hereby acknowledged

Your Konica Minolta Business Solutions Partner:

--	--

Konica Minolta
Business Solutions Europe GmbH
 Europaallee 17
 30855 Langenhagen • Germany
 Tel.: +49 (0) 511 74 04-0
 Fax: +49 (0) 511 74 10 50
 www.konicaminolta.eu