



KONICA MINOLTA

The essentials of imaging



EXPECT  
IMPACT

# **bizhub C25**

A4 administrator in colour and b/w

**Office system bizhub C25**

bizhub C25, office system



# The colour all-in-one for all-round administration

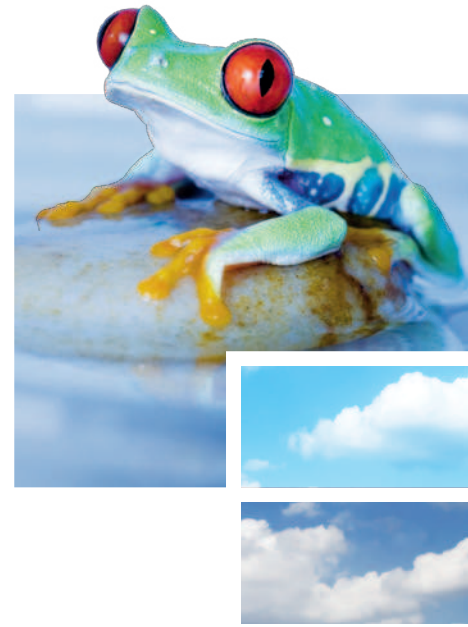
No matter which trade or industry, similar needs unite back offices in different environments: Whether order processing, sales administration, accounting, logistics or else, busy back office teams everywhere need direct and instant access to a versatile multifunctional output device so they can process enquiries, orders, delivery notes and similar documents without delay.

Perfect for this purpose, the bizhub C25 offers the comprehensive capabilities of a fully featured A4 colour all-in-one. This is the ideal compact in- and output device for locations that require full versatility but don't have a lot of room to spare. Combining printing, copying and scanning in colour and b/w as well as fax capabilities in a single system, the bizhub C25 impresses with its all-round functionality.

## → Workflow options



# Compact partner for the back office



## → Enhanced user comfort

With its small footprint, compact size and low weight, the bizhub C25 is the perfect A4 all-in-one that is always close at hand but doesn't ask for a lot of space. Its quiet operation makes it ideal for installation right next to the workplace, while the attractive InfoLine design ensures user comfort and convenience for any kind of every-day A4 office job, whether that's printing, copying, scanning or faxing. Such comprehensive functionality makes the bizhub C25 an asset to every small office and especially suitable for the back office, where enquiries, orders, delivery notes and more need to be processed instantly.

## → Sound eco-performance

The bizhub C25 combines efficient energy-saving features with the use of recycled materials in its manufacture and as an environmentally sound product employs ozone-free parts. The system also impresses with an extremely low energy consumption that is largely due to Konica Minolta's state-of-the-art fusing technology: The use of Simitri® HD polymerised toner enables fixing at lower temperatures, which effectively shortens the warm-up period while enhancing energy efficiency. These comprehensive eco-technologies help minimise the bizhub C25's environmental impact and merit the renowned eco-labels Blue Angel and Energy Star.

In addition, Simitri® HD polymerised toner itself enhances the bizhub C25's eco-performance even further: The toner's polymerisation process is much kinder to the environment than the production of conventional toner. And using biomass as a carbon-neutral ingredient, Konica Minolta's Simitri® HD toner answers the essential requirements of the modern, CO<sub>2</sub>-conscious society.



## → Configurations



Key features	Key benefits
Small footprint	Ideal for use right next to the workplace
InfoLine design	High user comfort thanks to easy operation and clearly structured user panel
Simitri® HD	Combines superior image quality with sound eco-performance





# Administrative workflows perfectly supported

## → Instant printer

The bizhub C25 is ideal as a printer in the back office where documents like orders and delivery notes are mostly printed in b/w but occasionally contain colour, e.g. on company stationery. Konica Minolta's latest Emperon™ controller technology is applied to the bizhub C25 and ensures its seamless integration into most networks as well as compatibility with standard operating systems and most business applications. Its 800 MHz page-processor, 256 MB standard and 512 optional RAM as well as the optional 40 GB hard disc guarantee a smooth and productive performance. Standard PostScript and PCL as well as optional XPS support are also available via the Emperon™ system.

With Konica Minolta's award-winning My Tab feature, all functions that are frequently needed in the back office, including standard duplex, n-up and overlay, can be combined under a single tab. This much facilitates printing the kind of documents typically handled in this environment. The combination of duplex and the overlay function is of particular importance for the automatic printing of the company's terms and conditions on the reverse of every official order or delivery note.

## → Productive copier

Equipped with standard document feeder and duplex unit, the bizhub C25 delivers up to 24 A4 copies per minute and offers highest convenience for quick and flexible copying right next to the workplace. Its standard 250-sheet paper feeder as well as the flexible 100-sheet multi manual feed tray can be extended with an optional lower paper feeder to provide a maximum paper capacity of 850 sheets. All standard paper sources and even the duplex unit process up to 210 gsm paper and thus ensure an attractive media versatility.

Where required, access to colour printing or copying can be restricted to authorised operators, while both functionalities remain freely available in black and white.



## → Versatile scanner

Scanning is essential for today's office communication and facilitates the sharing and distribution of information. The bizhub C25 scans up to 20 originals per minute in b/w and produces up to 10 colour scans per minute. The efficient scanning functionality includes Scan-to-Email, -FTP, -SMB and supports PDF, TIFF and JPEG as scan formats. Scanning is the perfect application not only to share and distribute relevant information among team members in the back office, but also to digitize e.g. incoming invoices in colour and archive them electronically but still true to the original. User flexibility is further enhanced with the clever scan to USB feature that enables timesaving direct scanning to the USB stick without any detour via the PC.

## → Efficient fax

Work procedures that are typical for the back office include a specific requirement for faxing. The bizhub C25 provides a highly efficient Super G3 fax functionality that ensures for example the reliable receipt of incoming enquiries and orders. Extra user convenience is available by programming automatic forwarding of incoming faxes to a particular email account. This gives the recipient the choice of archiving the email, printing it or deleting it after reading the message. PC fax on the other hand is an important eco-friendly feature, as sending faxes directly from the PC saves having to print documents before faxing them.

## → Barcode printing with BENS G3\*

Barcode and Unicode printing are essential applications for businesses with varied backgrounds, in particular the logistics field where many back offices are found. The optional universal printing solution BENS G3 from Suchy MIPS' is a hardware tool that works like a network print server. Completely application-independent, BENS G3 detects PCL barcode sequences in print data and changes these into barcodes before sending the print job with the barcode to e.g. the bizhub C25 on the network. The feature set even includes a filter for carbon copy functionality, so that a print job only needs to be sent once; depending on the filter setting one or more copies are simultaneously produced and can be output on paper from different trays. BENS G3 is particularly attractive for SAP users. Representing a flexible, comprehensive yet cost-effective tool, it is the ideal replacement for printer-specific barcode solutions, whether SIMMs, DIMMs, flash cards or others.

## → Printing from AS/400 with IAPS\*

For companies working with AS/400, iSeries or zSeries environments, IAPS series is the ideal, optional AS/400 printing solution that provides innovative, high-quality IPDS print servers for workgroup and back office printers. With IAPS (Advanced Print Servers IPDS), any PostScript or PCL5 compatible multi-functional printing device can print AFP/IPDS from an IBM host. The printer, e.g. a bizhub C25, retains its ability to print different types of incoming print jobs; and the IAPS itself can be placed anywhere on the network. The IAPS series supports the latest AFP FS45 full image printing features. This important and versatile printing option provides maximum print job security, stability and reliability in combination with complete workflow and process flexibility.

\* Option: This hard- or software is not included in the bizhub C25 standard delivery

Key features	Key benefits
Multifunctionality	Increases user flexibility and saves space as it replaces four separate devices
Enhanced scanning with Scan-to-Email, -FTP, -SMB and -USB	Ensures convenient operation, streamlines workflows and improves overall productivity
Efficient faxing	PC fax e.g. helps to save paper because documents don't need to be printed before faxing
Supports almost any workflow	Suitable for typical back office environments, e.g. because of SAP and AS/400 printing (optional)



# Administration and service made easy

## → PageScope Net Care Device Manager

The standard PageScope Net Care Device Manager facilitates the central implementation of system network configurations and central status monitoring. The application provides fast access to and simple monitoring of individual or all devices on the network, helping to maximise the uptime of all monitored equipment.

## → CS Remote Care

Pro-active and highly flexible service support is available with CS Remote Care. Konica Minolta's remote monitoring application helps to keep the bizhub C25 running smoothly, minimising interruptions and maximising system availability. All relevant system data are transmitted directly to the Konica Minolta service in an automated process that never needs user intervention.

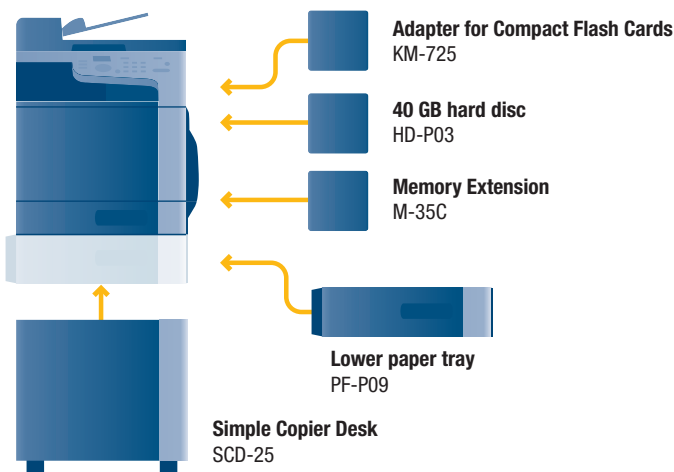
### Key features

Central administration

### Key benefits

Facilitates the administrator's task, saves time and effort

## → Option diagram & descriptions



### bizhub C25 Basic system

A4 communication center with 24 c/ppm b/w and colour. Standard Emperon™ controller with PCL 6 and PostScript 3 support (XPS optional). Paper capacity of 250 + 100 sheets standard and 500 sheets optional. Automatic document feeder and duplex unit standard. Up to 768 MB memory (256 MB standard) and optional 40 GB hard disc.

### PF-P09

Lower paper tray A4, 500 sheets up to 90 gsm

### SCD-25

Simple copy desk. Ensures correct height and provides room for paper storage

### KM-725

Adapter for Compact Flash Cards. Required for direct printing, downloading fonts/profiles/overlays, collating

### HD-P03

40 GB hard disc. Enables XPS and job retention in addition to all extra functions with CF card

### M-35C

Memory Extension faster processing

## ➔ Technical specifications

### Copier specifications

<b>Copying process</b>	Electrostatic laser copy Tandem, indirect
<b>Toner system</b>	Simitri® HD - polymerised toner
<b>Copy/print speed A4 (mono/colour)</b>	Up to 24/24 cpm
<b>Autoduplex speed A4 (mono/colour)</b>	Up to 24/24 cpm
<b>1st Copy time (mono/colour)</b>	11/16 sec.
<b>Warm-up time</b>	Approx. 38 sec. <sup>3</sup>
<b>Copy resolution</b>	600 x 600 dpi
<b>Gradation</b>	256 gradations
<b>Multi-copy</b>	1–99
<b>Original format</b>	Max. A4
<b>Magnification</b>	25–400% in 0.1% steps
<b>Copy functions</b>	Duplex copy 2in1, 4in1 Density adjustment Card Shot Electronic collation <sup>1</sup>

### Printer specifications

<b>Print resolution</b>	600 x 600 dpi x 3 bit
<b>1st print time (mono/colour)</b>	16/16 sec.
<b>Controller CPU</b>	800 MHz
<b>Page description language</b>	PostScript 3 (CPSI 3016) PCL 6 (XL 3.0) PCL 5e/c XPS <sup>2</sup> PDF 1.7 Direct Printing <sup>1</sup>
<b>Operating systems</b>	Windows XP (32/64) Windows VISTA (32/64) Windows 7 (32/64) Windows Server 2003 (32/64) Windows Server 2008 (32/64) Windows DPWS support Macintosh OSX (10.2.8/10.3.9/10.4/10.5/10.6) Linux: SUSE; Red Hat Citrix Netware 4/5/6
<b>Printer fonts</b>	80x PCL Latin 137x PostScript 3 Emulation Latin
<b>Print functions</b>	Direct print <sup>1</sup> of PDF (version 1.7); JPEG; TIFF; XPS <sup>2</sup> Overlay Watermark N-up Poster Booklet page order Collating <sup>1</sup>

### Scanner specifications

<b>Scan speed</b>	Colour/Mono up to 10/20 opm (300 dpi via DF)
<b>Scan resolution</b>	Max.: 600 x 600 dpi (TWAIN/WIA only)
<b>Scan modes</b>	Network TWAIN scan WIA Scan Scan-to-eMail Scan-to-FTP Scan-to-SMB Scan-to-USB
<b>File formats</b>	JPEG; TIFF; PDF
<b>Scan destinations</b>	Up to 220 (shared with fax)

### Fax Specifications

<b>Fax standard</b>	Super G3
<b>Fax transmission</b>	Analogue; PC-Fax
<b>Fax resolution</b>	Max.: 203 x 392 dpi (super fine)
<b>Fax compression</b>	MH; MR; MMR; JBIG
<b>Fax modem</b>	Up to 33.6 Kbps
<b>Fax destinations</b>	Up to 220 (shared with scan)
<b>Fax functions</b>	Time shift; Fax Forwarding to eMail

### System specifications

<b>System memory</b>	Standard: 256 MB Max.: 768 MB
<b>System hard disc<sup>2</sup></b>	40 GB optional
<b>CF Card Adapter<sup>1</sup></b>	optional
<b>Interface</b>	10Base-T/100Base-TX/1000Base-T Ethernet USB 2.0
<b>Network protocols</b>	TCP/IP (IPv4 / IPv6); IPX/SPX; NetBEUI; AppleTalk (EtherTalk); SMB; LPD; IPP; SNMP; HTTP; HTTPS
<b>Frame types</b>	Ethernet 802.2; Ethernet 802.3; Ethernet II; Ethernet SNAP
<b>Automatic document feeder</b>	Up to 35 originals; A4; 50–110 gsm
<b>Printable paper size</b>	A6–A4; Customised paper sizes
<b>Printable paper weight</b>	60–210 gsm
<b>Paper input capacity</b>	Standard: 350 sheets Max.: 850 sheets
<b>Tray 1</b>	250 sheets; A6–A4; 60–210 gsm Custom (92–216 x 148–297 mm)
<b>Tray 2 (optional)</b>	500 sheets; 60–90 gsm; A4
<b>Manual Bypass</b>	100 sheets; A6–A4; 60–210 gsm Custom (92–216 x 148–356 mm)
<b>Automatic duplexing</b>	A4; 60–210gsm
<b>Output capacity</b>	Max.: 150 sheets face down
<b>Copy/print volume (monthly)</b>	Recommended: 1,260 pages Max.: 120,000 pages
<b>Toner lifetime<sup>4</sup></b>	Cyan, magenta, yellow and black yield – preinstalled up to 2,000 pages Cyan, magenta, yellow and black yield – replacements up to 6,000 pages
<b>Imaging Unit lifetime</b>	Cyan, magenta, yellow and black yield up to 30,000 pages
<b>Power consumption</b>	220-240 V / 50/60Hz; less than 1.1 KW
<b>System dimensions (W x D x H, mm)</b>	447 x 558 x 490
<b>System weight</b>	Approx. 32,5 kg

### System features

<b>Security</b>	IP filtering and port blocking SSL2, SSL3 and TLS1.0 network communication IPsec support IEEE 802.1x support Secure Print <sup>2</sup> Hard disc data encryption (print only) <sup>2</sup>
<b>Software</b>	PageScope Net Care Device Manger PageScope Direct Print PageScope WebConnection

<sup>1</sup> Optional CF card enables direct printing (PDF, TIFF, JPEG), downloading fonts/profiles/overlays, collating, PDF direct print.

<sup>2</sup> Optional hard disc kit enables secure printing, proof-then-print, print & hold, job storing, XPS emulation and using downloaded profiles in addition to all extra functions with CF card.

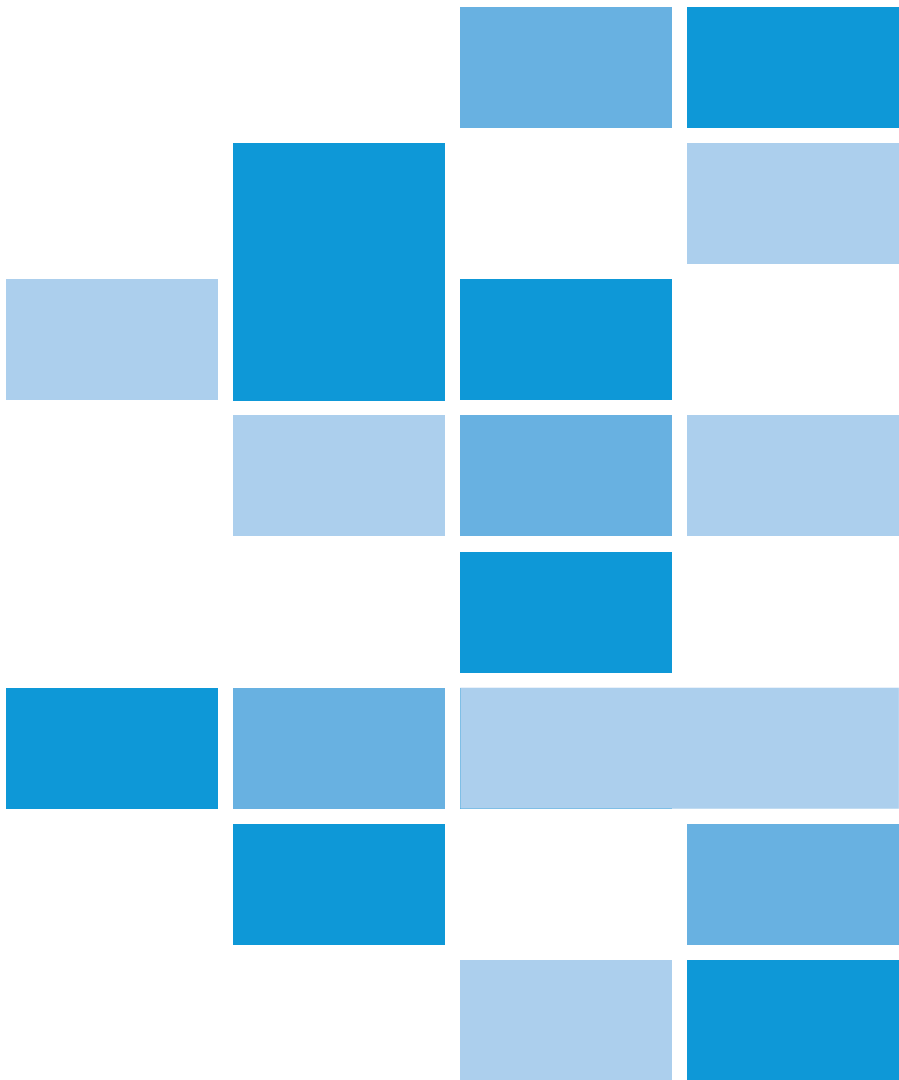
<sup>3</sup> Warm up time may vary depending on the operating environment and usage

<sup>4</sup> Declared yield in accordance with ISO/IEC 19798



KONICA MINOLTA

Simitri HD  
High Definition Polymerised Toner



- All specifications relating to paper capacity refer to A4-size paper of 80 gsm quality.
- All specifications relating to scanning, copying or printing speeds refer to A4-size paper that is scanned, copied or printed crosswise in multipage, simplex mode.
- The support and availability of the listed specifications and functionalities varies depending on operating systems, applications, network protocols as well as network and system configurations.
- The stated life expectancy of each consumable is based on specific operating conditions such as page coverage for a particular page size. The actual consumables life will vary depending on the use and other printing variables including page coverage, page size, media type, continuous or intermittent printing, ambient temperature and humidity.
- Some of the product illustrations contain optional accessories.
- Specifications and accessories are based on the information available at the time of printing and are subject to change without notice.
- Konica Minolta does not warrant that any prices or specifications mentioned will be error-free.
- Microsoft, Windows and the Windows logo are trademarks, or registered trademarks, of Microsoft Corporation in the United States and/or other countries.
- All other brand and product names may be registered trademarks or trademarks of their respective holders and are hereby acknowledged.
- Printed in Germany on chlorine-free bleached paper.

Your Konica Minolta Business Solutions Partner:


**Konica Minolta**  
**Business Solutions Europe GmbH**  
 Europaallee 17  
 30855 Langenhagen • Germany  
 Tel.: +49 (0) 511 74 04-0  
 Fax: +49 (0) 511 74 10 50  
 www.konicaminolta.eu